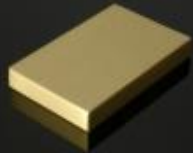


BrassArt

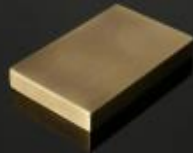
— DISTINCTLY BRITISH —



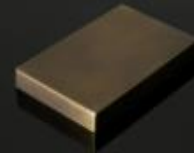
POLISHED
BRASS



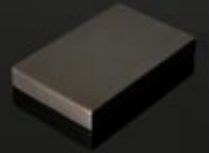
SATIN
BRASS



LIGHT ANTIQUE
BRASS



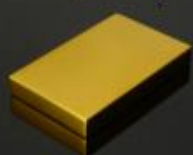
MEDIUM ANTIQUE
BRASS



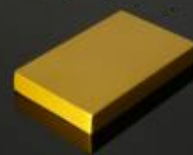
DARK ANTIQUE
BRONZE



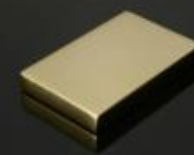
POLISHED BRASS
(UNLACQUERED)



FRENCH LACQUER
GILT



SATIN FRENCH
LACQUER GILT



ANTIQUÉ
GOLD



TITANIUM GOLD
(PVD)



POLISHED
CHROME



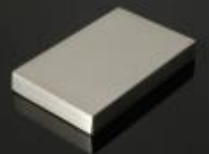
SATIN
CHROME



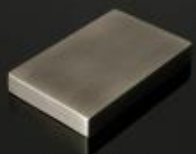
SILVER
PLATE



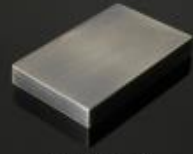
POLISHED
NICKEL



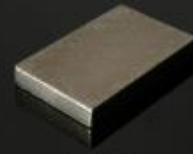
SATIN
NICKEL



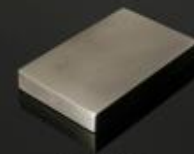
ANTIQUÉ
NICKEL



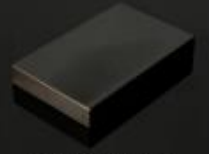
ANTIQUÉ
SILVER



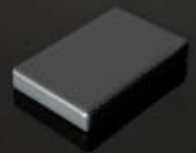
PEWTER



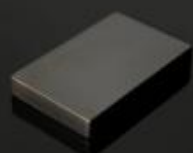
WHITE
BRONZE



DARK MATT
BRONZE



ANTHRACITE
(RAL7016)



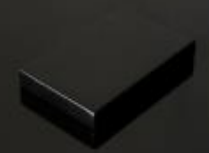
BRONZE METAL
ANTIQUÉ



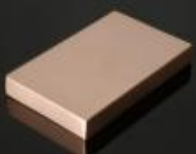
BLACK
NICKEL



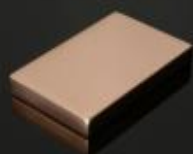
BLACK GREY
(RAL7021)



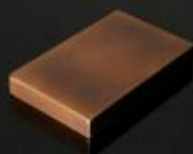
MATT BLACK
(RAL9005)



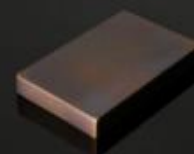
SATIN
COPPER



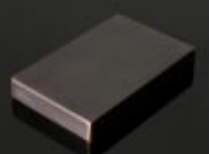
POLISHED
COPPER



LIGHT ANTIQUÉ
COPPER



MEDIUM ANTIQUÉ
COPPER



DARK ANTIQUÉ
COPPER

OUR FINISHES

Unless otherwise specified, all products are finished with either a gloss or matt stove lacquer. This clear, protective coating minimises the need for frequent polishing and cleaning while offering significantly greater durability than standard air-drying lacquers. Electro-plated finishes however, do not require lacquer, as the electroplating process itself provides a highly durable and protective coating.

CARE OF LACQUERED BRASS

Regular cleaning with warm, soapy water will help maintain the appearance of your brassware. For added protection, a quality wax polish can be used, although it is not recommended for high-traffic areas. These practices will effectively remove surface impurities such as salts, oils, and residues, helping to extend the life of the coating. Always ensure any excess liquid is thoroughly wiped away after cleaning to prevent watermarks.

The lifespan of lacquer can be influenced by various environmental and atmospheric factors, including air quality, human contact, sea salt, and industrial pollution. Prolonged exposure to these elements may cause the lacquer finish to degrade, occasionally leading to premature deterioration.

If the lacquer begins to deteriorate, it can be removed using a high-quality paint stripper, following the manufacturer's instructions carefully. Once the lacquer is removed, the item can be cleaned and restored using a metal polish or similar cleaning products.

Chemical or abrasive cleaning products (solutions or materials) must never be used under any circumstances, as they will cause rapid deterioration of the lacquer and void any applicable warranty.

CARE OF UN-LACQUERED BRASS

Un-lacquered brass is polished during production but, without a protective coating, it will naturally age over time, developing a darker and duller patina. To help maintain its finish, we recommend using a high-quality metal polish for regular cleaning. If desired, your products can be re-finished in the future to restore their original appearance.

CARE OF ELECTRO-PLATED FINISHES

Electro-plated finishes are not coated with lacquer. Similar to un-lacquered brass, we recommend using a high-quality metal polish to maintain and prolong the finish.

PRODUCTS SITUATED OUTDOORS

Products intended for outdoor use are exposed to elevated levels of air pollutants, human contact, sea salt, and industrial pollution. These conditions require more frequent cleaning to maintain their original appearance. Unless otherwise specified, we apply a more durable lacquer to these products to help extend their finish. However, regular cleaning as outlined above remains essential.

