

BrassArt

— DISTINCTLY BRITISH —

Luxury Cabinet Hardware

Welcome,

كَبِّ الِهْأُ,

добро пожаловать,

Benvenuto,

Bienvenue,

Bienvenido,

Herzlich Willkommen

BrassArt

DISTINCTLY BRITISH

*Boutique Manufacturer of Luxury Door,
Cabinet & Window Hardware*

For decades BrassArt have been manufacturing luxury architectural ironmongery for 5-star hotels, royal palaces, super yachts, castles, flagship retail stores and luxury private residences. Known originally for our period ranges we also have the expertise and back-catalogue of products to furnish stately homes, listed buildings and heritage properties to their original standards of style and function.

Our aim is to ensure quality luxury architectural ironmongery is admired and appreciated worldwide. As **purveyors of premium touchpoints through fine craftsmanship, unrivalled quality, & classic, timeless design**; we work hard to ensure the needs of our clients and primary customers are fully met, offering an extensive knowledge of both traditional and contemporary products to the global ironmongery market.

As with all products, our cabinet hardware is made and finished to order; taken from initial conceptual design through to exquisite hand-finishing and packaging. Each phase of production in our factory at the heart of the Black Country in the West Midlands is overseen by our team of dedicated engineers. Our cabinet hardware is found in some of the world's most luxurious kitchens, bedrooms and bathrooms – something we'll never take for granted and that continues to drive our commitment to excellence.

Premium Bespoke Design Service

We recognise that the most distinguished of styles will often require a design and look offered only by a tailored piece or set of hardware. BrassArt are one of the few remaining UK manufacturers to offer a bespoke design and manufacturing service to end users and retail partners alike. Our approach, led by your inspiration, follows our core principles of exceptional timeless design, unmatched quality and supreme craftsmanship. To start your bespoke journey get in touch with one of our team.

BrassArt, England. Est. 1935.



Our Finishes

Electro-plated Finishes



Polished Chrome
(PC)



Satin Chrome
(SC)



Polished Nickel
(PN)



Satin Nickel
(SN)



Silver Plate
(SP)



Antique Gold
(AG)



Rose Gold
(RG)



Polished Copper
(PCu)



Black Nickel
(BN)



Ebony Black
(EEP)



Satin French
Lacquer Gilt
(SFLG)



Polished French
Lacquer Gilt
(FLG)



Polished Brass
Lacquered
(PB)



Satin Brass
(SB)



Light Antique Brass
(LAB)



Medium Antique
Brass
(MAB)



Dark Antique Brass
(DAB)



Dark Antique Copper
(DACu)



Medium Antique
Copper
(MACu)



Light Antique Copper
(LACu)



White Bronze
(WBz)



Pewter
(PEW)



Bronze Metal Antique
(BMA)



Antique Nickel
(AN)



Antique Silver
(AS)

Living Finishes



Left: **Louis XV Cupboard Pull Handle** (LH), 357LH, (Pull 226 x 75mm, centres: 208mm) *Pictured in Polished Brass*
Middle: **Louis XV Cupboard Pull Handle**, 358, (Pull 220 x 44mm, centres: 196mm) *Pictured in Polished Chrome*
Right: **Louis XV Cupboard Pull Handle** (RH), 357RH, (Pull 226 x 75mm, centres: 208mm) *Pictured in Medium Antique Copper*

Louis



Top Left: **Louis XIV Cupboard Knob**, 195, (Knob: 45 x 20mm) *Pictured in Medium Antique Copper*

Middle: **Louis XV Cupboard Knob**, 351, (Knob: 57 x 24mm) *Pictured in Polished Brass*

Top Right: **Louis XV Cupboard Knob**, 154, (Knob: 57 x 24mm) *Pictured in Medium Antique Brass*

Bottom Left: **Louis XVI Cupboard Knob**, 120, (Knob: 34 x 18mm) *Pictured in Medium Antique Brass*

Bottom Right: **Louis XVI Cupboard Knob**, 135, (Knob: 38mm) *Pictured in Medium Antique Copper*

Adam



Top: **Adam Cupboard Knob**, 265, (Knob: 40mm)

Right: **Adam Cupboard Knob**, 355, (Knob: 28mm)

Bottom: **Adam Cupboard Knob**, 353, (Knob: 40 x 24mm)

Left: **Adam Cupboard Knob**, 356, (Knob: 21mm)

All pictured in Light Antique Brass

Liberty



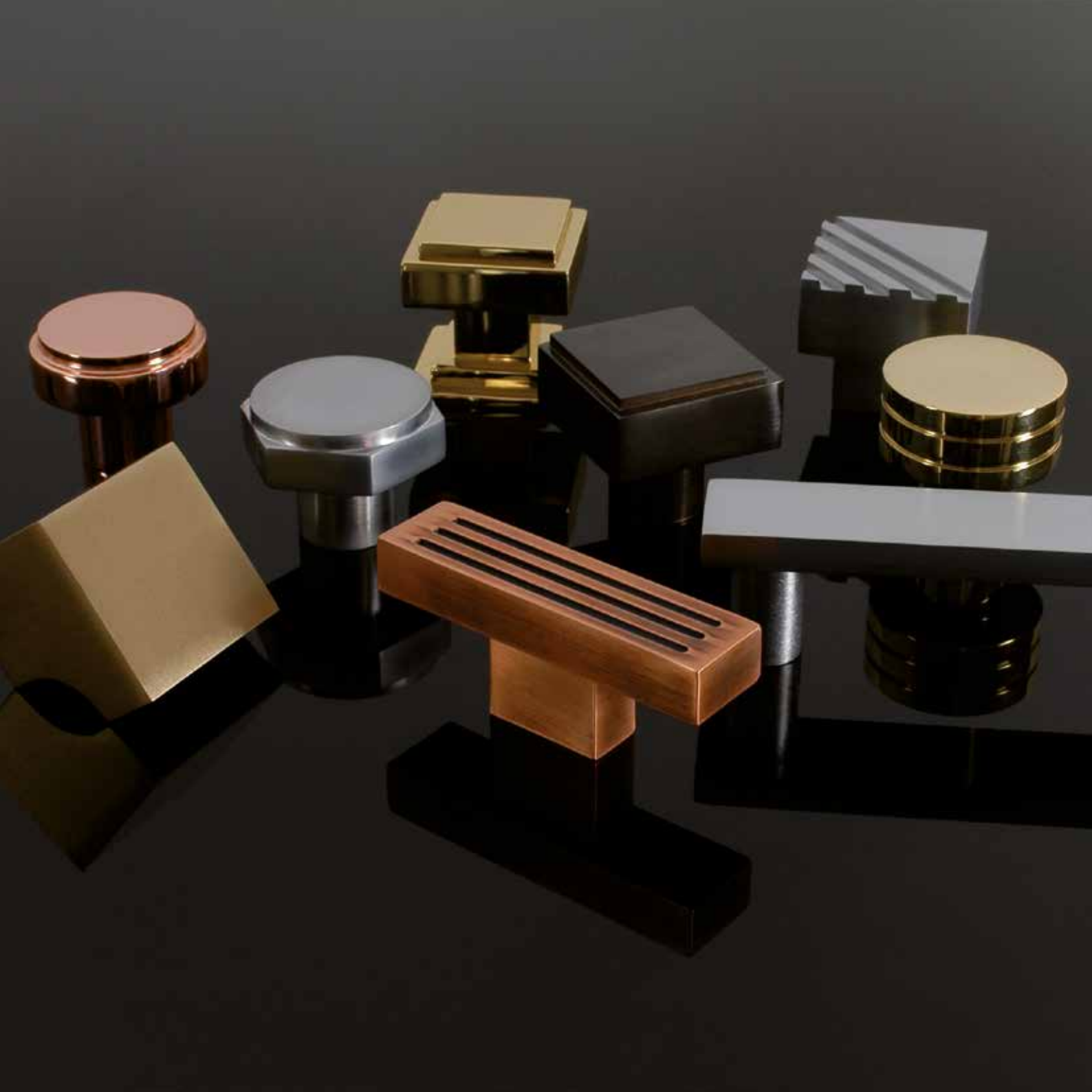
Burlington

Governor

Left: **Burlington Cupboard Knob**, 225, (Knob: 40 x 27mm), *Pictured in Dark Antique Brass*

Middle: **Liberty Cupboard Knob**, 737, (Knob: 33 x 27mm), *Pictured in Antique Nickel*

Right: **Governor Cupboard Knob**, 352, (Knob: 36 x 23mm), *Pictured in Bronze Metal Antique*



Thames



Thames Cupboard Knob

1107-25 (25mm)

1107-30 (32mm)

Pictured in Satin Brass

Barton



Barton Cupboard Knob

1106-25 (25 x 25mm)

1106-30 (32 x 32mm)

Pictured in Satin Brass

Wilton



Wilton Cupboard Knob

1132-25 (25mm)

1132-32 (32mm)

Pictured in Satin Brass

Camden



Camden Cupboard Knob

1108-25 (25mm)

1108-32 (32mm)

Pictured in Polished Brass

Lincoln



Lincoln Cupboard Knob

1109-25 (25mm)

1109-32 (32mm)

Pictured in Satin Brass

Burford



Burford Cupboard Knob

1125-25 (25mm)

1125-32 (32mm)

Pictured in Polished Brass

Princess



Pictured in Polished Chrome





Princess Cupboard Knob, 937-1. See page 13.

Pictured in Antique Nickel

Princess



Princess Cupboard Knob

937-1 (28mm)

937-2 (35mm)



Princess Oval Cupboard Knob

938 (32 x 18mm)



Princess Flush Pull

911 (115 x 57mm)



Princess Curved Pull Handle on Roses

939 (174 x 42mm, centres: 160mm)



Princess Bowed Pull Handle on Roses

955 (174 x 20mm, centres: 160mm)

Pictured in Polished Nickel



Constable



Constable



Constable Cupboard Knob

616-1 (28mm)

616-2 (35mm)



Constable Oval Cupboard Knob

617 (31 x 28mm)



Constable Cup Handle

691 (92 x 47mm, centres: 76mm)



Constable Curved Pull Handle on Roses

652 (174 x 42mm, centres: 160mm)



Constable Flush Pull

621 (115 x 57mm)

All pictured in Polished Nickel



Constable Cupboard Knob, 616-2. See page 16.

Pictured in Dark Antique Brass



Canterbury Cupboard Cup Pulls, 1123-92. See page 19.
Pictured in (bottom left to top right): Satin Brass, Ebony Black, Medium Antique Brass, Satin Chrome

Canterbury



Left:

Canterbury Cupboard Cup Pull

1123-92 (92mm, centres: 76mm)

Right:

Canterbury Cupboard Cup Pull

1123-240 (240mm, centres: 224mm)

Also available:

1123-435 (435mm, centres: 417mm)

Both pictured in Medium Antique Brass

Bedford



Left:

Bedford Cupboard Pull

1118-170 (170 x 15mm, centres: 128mm),

1118-200 (200 x 15mm, centres: 160mm),

1118-260 (260 x 15mm, centres: 192mm),

1118-345 (345 x 15mm, centres: 256mm),

1118-550 (550 x 15mm, centres: 414mm)

Right:

Bedford Cupboard T-Bar

1117-40 (40 x 15mm)

1117-60 (60 x 15mm)

Both pictured in Light Antique Copper



Bedford Cupboard T-Bar, 1117-60. See page 20.
Pictured in Light Antique Copper



Henley Cupboard Knob, 1110-32
Henley Cupboard Pull, 1110-260. See page 23.
Pictured in Satin Chrome

Henley

Top Left:

Henley Cupboard T-Bar

1110-40 (40 x 15mm)

1110-60 (60 x 15mm)

Bottom Left:

Henley Cupboard Knob, 1110-32 (32 x 32mm)

Right (both):

Henley Cupboard Pull

1110-170 (170 x 15mm, centres: 128mm),

1110-200 (200 x 15mm, centres: 160mm),

1110-260 (260 x 15mm, centres: 192mm),

1110-345 (345 x 15mm, centres: 256mm),

1110-550 (550 x 15mm, centres: 414mm)

All pictured in Satin Chrome

Newport



Top two:

Newport Cupboard Pull

1116-170 (170 x 15mm, centres: 128mm),
1116-200 (200 x 15mm, centres: 160mm),
1116-260 (260 x 15mm, centres: 192mm),
1116-345 (345 x 15mm, centres: 256mm) ,
1116-550 (550 x 15mm, centres: 414mm)

Middle:

Newport Cupboard T-Bar

1115-60 (60 x 25 mm)

Bottom:

Newport Cupboard Knob

1114-32 (32 x 32mm)

All pictured in Polished Brass



Newport Cupboard Knob, 1114-32. See page 24.
Pictured in Polished Brass



Chelsea Cupboard Pull , 1112-170. See page 27.
Pictured in Light Antique Brass

Chelsea



Left:

Chelsea Cupboard Pull

1112-170 (170 x 15mm, centres: 128mm),
1112-200 (200 x 15mm, centres: 160mm),
1112-260 (260 x 15mm, centres: 192mm),
1112-345 (345 x 15mm, centres: 256mm),
1112-550 (550 x 15mm, centres: 414mm)

Right:

Chelsea Cupboard Knob

1111-26 (26 x 26mm)
1111-32 (32 x 32mm)

All Pictured in Light Antique Brass

Compton



Compton Cupboard Pull

1104-170 (170mm, centres: 128mm),
1104-200 (200mm, centres: 160mm),
1104-260 (260mm, centres: 192mm),
1104-345 (345mm, centres: 256mm),
1104-550 (550mm, centres: 414mm)

Compton Cupboard Knob

1103-25 (25mm)
1103-32 (32mm)

All Pictured in Polished Copper

Wychbury



Wychbury Cupboard Pull

1102-170 (170mm, centres: 128mm),
1102-200 (200mm, centres: 160mm),
1102-260 (260mm, centres: 192mm),
1102-345 (345mm, centres: 256mm) ,
1102-550 (550mm, centres: 414mm)

Wychbury Cupboard Knob

1101-26 (26mm)
1101-32 (32mm)

All Pictured in Satin Chrome

Broadway





*Pictured (left to right) in:
Polished Chrome pull with New Zealand Natural Paua Shell inlay
Polished Nickel pull with Rhino Abyss inlay
Polished Brass pull with Rhino Graphite inlay*

Lulworth



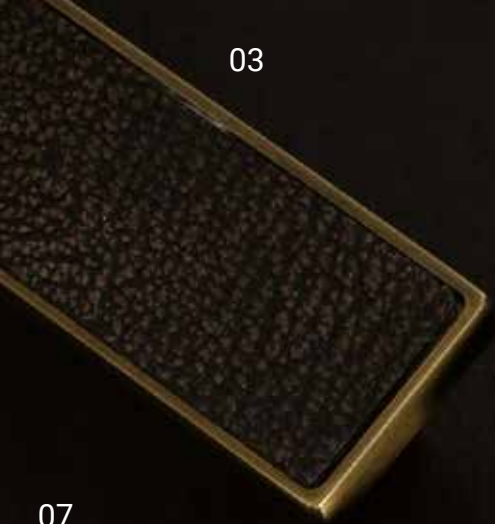
Holt

*Pictured (left to right) in:
Light Antique Brass with Shagreen Ethiopian inlay
Dark Antique Brass with Rhino Graphite inlay.*

Bude



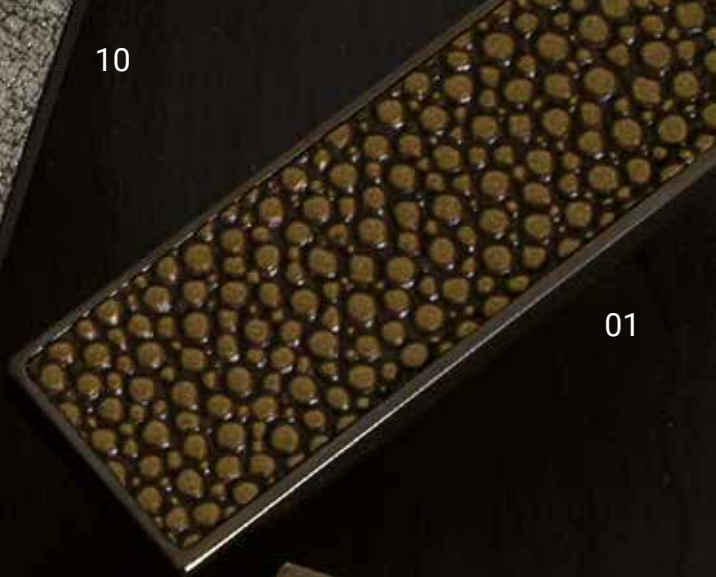
*Pictured (clockwise) in:
Medium Antique Brass with Shagreen Ethiopian inlay,
Light Antique Brass with Shargeen Parch inlay,
Polished Chrome with Crocodile Black inlay,
Satin Brasss with Rhino Abyss inlay.*



03



10



01



07



02



08



04

<<< Inlays

- 01. Shagreen Ethiopian
- 02. Shagreen Parch
- 03. Rhino Abyss
- 04. Crocodile Black
- 07. White Mother of Pearl
- 08. New Zealand Paua Shell
- 10. Rhino Graphite

Sizes

Broadway Cupboard T-Bar

- 1122-30-[inlay] (30 x 15mm),
- 1122-40-[inlay] (40 x 5mm),
- 1122-60-[inlay] (60 x 15mm)

Broadway Cupboard Pull

- 1122-170-[inlay] (170 x 15mm, centres: 128mm),
- 1122-200-[inlay] (200 x 15mm, centres: 160mm),
- 1122-260-[inlay] (260 x 15mm, centres: 192mm),
- 1122-345-[inlay] (345 x 15mm, centres: 256mm)
- 1122-550-[inlay] (550 x 15mm, centres 414mm)

Also available:

- 1126-250-[inlay] (250 x 25mm)

Bude Semi-Circular Cupboard Pull

- 1128-60-[inlay] (60 x 30mm),
- 1128-90-[inlay] (90 x 45mm),
- 1128-125-[inlay] (125 x 63mm),
- 1128-200-[inlay] (200 x 100mm)

Holt Cupboard Knob

- 1127-32-[inlay] (32mm),
- 1127-38-[inlay] (38mm)

Lulworth Cupboard Knob

- 1124-38-[inlay] (38mm),
- 1124-42-[inlay] (42mm)



Bamboo



Bamboo Cupboard Knob, 800. See page 37.
Pictured in Light Antique Brass



Top to bottom:

Bamboo Cupboard Pull, 815, (156 x 6mm, centres: 128mm)

Bamboo Cupboard Pull, 814, (125 x 6mm, centres: 96mm)

Bamboo Cupboard Pull, 813, (90 x 6mm, centres: 64mm)

Bamboo Cupboard T-Bar, 812, (60 x 6mm)

Bamboo Cupboard T-Bar, 811, (35 x 6mm)

Bamboo Cupboard Knob, 800, (30mm)

All pictured in Light Antique Brass





Left:

Knightsbridge Knurled Cupboard Knob

1129-25(25mm),
1129-35 (35mm)

Pictured in Satin Brass

Middle:

Knightsbridge Cupboard T-Bar

1131-60 (60mm)

Pictured (left to right) in Satin Chrome, Satin Brass and Dark Antique Brass

Top Right:

Knightsbridge Knurled Cupboard Knob on Plate

1130-25 (25mm knob on 132 x 30mm plate),
1130-35 (35mm knob on 152 x 40mm plate)

Pictured in Medium Antique Brass

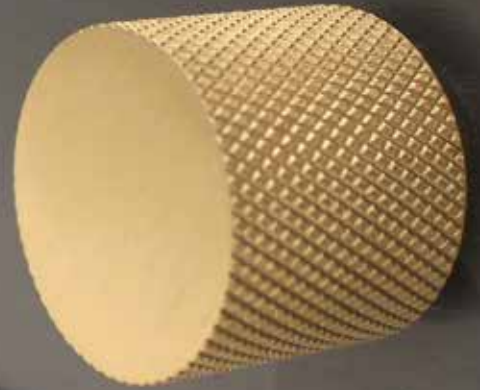
Bottom:

Knightsbridge Cupboard Pull

1132-170 (170mm, centres: 128mm),
1132-200 (200mm, centres: 160mm),
1132-260 (260mm, centres: 192mm),
1132-345 (345mm, centres: 256mm) ,
1132-550 (550 x 15mm, centres 414mm)

Pictured in Satin Brass

Knightsbridge



Knightsbridge Knurled Cupboard Knob, 1129-35. See page 39.
Pictured in Satin Brass



Parkstone Cupboard Pull

1105-74 (74 x 32mm),
1105-114 (112 x 50mm),
1105-188 (188 x 82mm),
1105-300 (300 x 130mm)

Pictured in Polished Chrome

Parkstone



Portland



Portland Cupboard Pull

1119-73 (73 x 10mm , centres: 64mm),
1119-169 (169 x 10mm, centres: 160mm),
1119-212 (212 x 10mm, centres: 203mm),
1119-265 (265 x 10mm, centres: 256mm),
1119-345 (345 x 10mm, centres: 336mm),
1119-550 (550 x 10mm, centres: 441mm)

Pictured in Satin Chrome

Wareham



Wareham Cupboard Pull

1120-73 (73 x 10mm, centres: 64mm),
1120-169 (169 x 10mm, centres: 160mm),
1120-212 (212 x 10mm, centres: 203mm),
1120-265 (265 x 10mm, centres: 256mm),
1120-345 (345 x 10mm, centres: 336mm),
1120-550 (550 x 10mm, centres: 441mm)

Pictured in Polished Nickel

Hampton



Hampton Cupboard Pull

1121-170 (170mm, centres: 128mm),
1121-200 (200mm, centres: 160mm),
1121-260 (260mm, centres: 192mm),
1121-345 (345mm, centres: 256mm),
1121-550 (550mm, centres: 414mm)

Pictured in Satin Nickel

Hale



Hale Cupboard Pull

1100-170 (170mm, centres: 128mm),

1100-200 (200mm, centres: 160mm),

1100-260 (260mm, centres: 192mm),

1100-345 (345mm, centres: 256mm),

1100-550 (550mm, centres: 414mm)

Pictured in Satin Chrome

BrassArt

— DISTINCTLY BRITISH —

We are always happy to discuss your architectural ironmongery needs, whether by email, telephone or through one of our approved partners.

Website: www.brassart.com
E-mail: sales@brassart.com
Tel.: +44 (0)1384 898839

